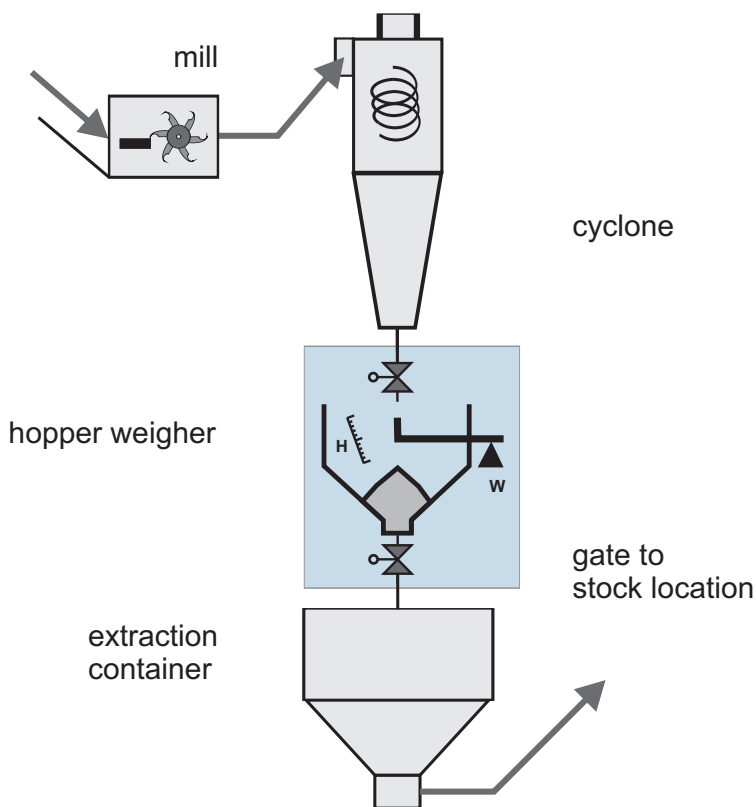


Hopper weigher - totalization of throughput

Product information

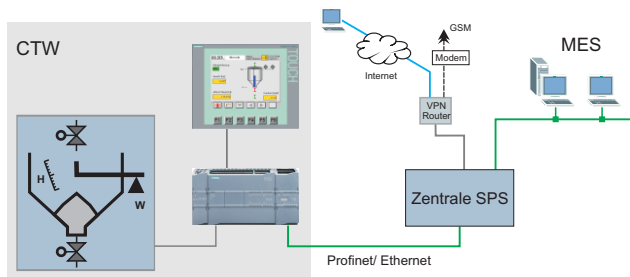


pictures without side panel

- Monitoring of material flow for management analysis
- Operating range: 500 ... 5.000kg/h
- Recycle flow of regrind, re-granulate, ...
- Adaption to variable bulk density
- PLC: Simatic S7-1200 with Siwarex-module
- maximum value of totalization: 999.999to
- Resolution: 10g, accuracy: 0,2% as to DIN8130
- Stand-alone operation or peripheral unit of a system linked via Profinet
- Areas of applications: extrusion, injection moulding, processing of solid bulk material



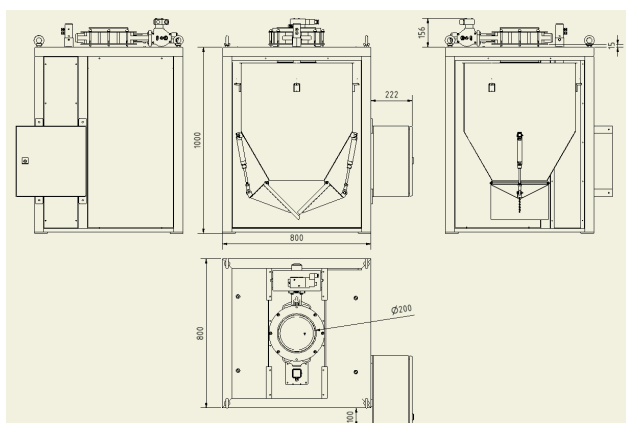
System integration



PLC- functions

- **HMI:**
Operation, commissioning, configuration, calibration sequence with plausibility test
- **Network:**
Access, diagnostics and remote control of CTW by a master PLC or host PC
- **Diagnostics:**
Alarms defined on commissioning
Alarm list
Trend charts

Dimensions



Application

The CTW batch scale is used to measure quantities of bulk goods which flow either in a continuous or interrupted manner. The individual batches are weighed, and the measured weight is added to an overall quantity. Upon instruction, the measurement ends and the quantity is reset.

This allows material flows to be balanced and evaluated from an economic point of view in the production process. This is especially interesting for return material that can be utilized in the production process as a valuable regrind or recycled material.

The design of CTW is optimized for regrind of various quality. The material discharge is generously dimensioned so that even rough or bridge-building material can be reliably removed. The scale also features adaptive filling. This function ensures that material is weighed reliably even when the bulk density changes.

The CTW batch scale is suitable as the centrepiece of a batch blending system. As per recipe specifications, up to eight components above the scale can be added in succession and weighed. A mixer below the scale ensures the even distribution of all components.

Technical specification

weigher:	range:	10 ... 100kg
	resolution:	10g
	accuracy:	0,2% as to DIN8130
hopper:	volume, nominal	200l
	filling volume	75 ... 115l
	filling cycle, min.	45s
	material	1.4301 (V2A)
system:	operating range	500 ... 5.000kg/h
monitoring:	totalizer format	xxx.xxx.xxx,xxxkg
	status indication	run, reset
installation:	power supply:	230VAC, 50/60Hz
	max. ambient temp.	45°C

Order code

CTW -	batch weigher
(...)	nominal volume
(...)kg	range of weight
Ex	material input valve: external
E200	material input valve: butterfly valve DN200
Q300	output flap 300x300mm
Px	no pneumatic pressure control
P6	pneumatic pressure control
Gx	no level control – just weight control
I1	level control, capacitive, single sensor
I2	level control, capacitive, dual sensors
B1	level control, enhanced capacitive, single sensor
B2	level control, enhanced capacitive, dual sensors
SS	PLC, stand-alone
SP	PLC, peripheral unit with comms via Profinet
ALx	no local alarm indication
ALL	alarm light
ALLH	alarm light and horn

Example see front page:

CTW-200l-60kg-E200-Q300-P6-B2-SP-ALx

